

# The Personalised Digital Learning Programme (PDLP)



Briefing for Parents

A PRESENTATION BY  
MINISTRY OF EDUCATION, SINGAPORE



OFFICIAL(OPEN)\NON-SENSITIVE

# The National Digital Literacy Programme (NDLP) and the PDLP

An Overview

# The National Digital Literacy Programme (NDLP)

1. The NDLP was launched in March 2020 to help students **strengthen their digital literacy and acquire digital skills** needed to navigate an increasingly digitalised world.
2. Under the NDLP, every secondary school student will **own a school-prescribed Personal Learning Device (PLD)**. Students may use funds from their Edusave Account to pay for the PLD.

# Intended Outcomes of the PDLP

The use of the PLD for teaching and learning aims to:



**Support the Development of Digital Literacy**



**Support Self-Directed and Collaborative Learning**



**Enhance Teaching and Learning**

# Students' Experiences



# Learning with a PLD

## Yuying Secondary School

Note: The information contained in this deck of slides is customised according to our school's context and the device selected.

# How will your child/ward use the PLD?

At Yuying Secondary School, your child/ward will be using the PLDs for...

- in class and out-of-class to promote **active learning** and **greater personalisation**.
- supporting of learning of the curriculum subjects **independently or collaboratively**.
- beyond the classroom, where students will be able to use the device for **home-based learning**.
- reviewing past lessons, **access digital resources** on the Singapore Student Learning Space (SLS) platform and other digital platforms to enhance their learning, or explore topics of their own personal interests using the device.

# **Supporting Students in the Safe and Effective Use of the Devices**

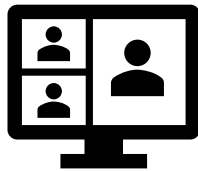
# Cyber Wellness Concerns Identified by Local Studies/Surveys



**Harmful Online  
Content**



**Gaming and  
associated risks**



**Cyberbullying**



**Excessive social  
media use**

\* Refer to [Slide 68](#) for the references of the research papers cited in this slide.

# Supporting Students in the Safe and Effective Use of the Devices

To enable a safer digital environment for learning with the use of PLDs, schools have implemented the following measures:

- School rules on digital device use
- Classroom management and routines
- Cyber Wellness Education in CCE
- Partnering parents/guardians to support students in their use of technology for learning
- MOE Device Management Application (DMA) to support a safer digital environment for learning

# School Rules on Digital Device Use

## ACCEPTABLE USE POLICY (AUP)

### Purpose of the Acceptable Use Policy (AUP)

Technology is an essential part of learning in today's world.

This Acceptable Use Policy (AUP) establishes guidelines on the appropriate use of EdTech resources to help students understand how to use these resources safely and responsibly, in line with efforts to develop students' digital literacies and growth as digitally responsible citizens.

EdTech resources include the following, but are not limited to:

- Learning devices (e.g. Personal Learning Devices (PLDs), school devices)
- ICT system accounts (e.g. Singapore Student Learning Space (SLS), iCON); and school internet networks.

#### General

1. Students should not attempt to access data, system and information that they are not authorised to access.
2. Students are reminded that the use of learning devices and the school's EdTech resources should solely be for the purpose of learning.

#### [For Secondary Schools] Using your PLD

3. Students are responsible for their PLDs. In the event of loss or theft of the device, students must make a police report and report the matter to the school.
4. In order to have a seamless learning experience, students should ensure that their PLDs are fully charged before bringing them to school. Should students need to charge their PLDs, they should only do so at home.
5. Students are reminded to keep their PLDs updated by installing the relevant patches and updates when being prompted by the system.
6. All PLDs are installed with a Device Management Application (DMA) to support a safe and conducive learning environment. Students should not attempt to bypass the DMA.
7. Students are responsible for regularly backing up their learning materials in their PLDs to prevent data loss.

#### Being a Responsible Digital Citizen

8. Students should interact with others in a respectful and responsible way. Students should not post online remarks that are
  - racially and/or religiously insensitive,
  - vulgar and/or offensive, or
  - hurtful to others.
9. Students should not use any devices to
  - store, modify, create or share content (e.g. documents, presentations, pictures and videos) that is inappropriate (e.g. indecent, pornographic, defamatory, hurtful to self or others).
  - make threats, cause harassment or embarrassment, impersonate or intimidate others.

## ACCEPTABLE USE POLICY (AUP)

10. Students should not use MOE / school-deployed ICT system accounts for any commercial activities (e.g. buying and selling of goods and services).

Non-compliance with the above will lead to disciplinary action in accordance with the school's discipline policy.

#### Respecting Copyright

11. Students are reminded to obtain explicit permission from the content owner(s) before downloading, copying or sharing any copyrighted materials (e.g. pictures, videos, music).
12. Students should not use, copy, edit or share digital files in an unauthorised or illegal manner.

#### Using Artificial Intelligence (AI)

13. Students must ensure that they meet the minimum age requirement specified in each AI tool's age restrictions before using it.
14. If the use of AI is permitted, students should acknowledge the use of AI in weighted assessments and homework as required.
15. Students are to practise academic integrity and be responsible for their own learning when using AI. Students must understand that they are ultimately short-changing themselves if they pass off others' work as their own.

#### Staying Safe and Secure Online

16. Students should report any incidents (e.g. unusual device behaviour or inappropriate use of devices) to the school via <https://go.gov.sg/eagle-eye>.
17. Students are reminded to develop online safety habits. These include not disclosing personal access credentials (e.g. MIMS password, PLD passcode), sensitive personal data (e.g. home address, passwords) online or on AI platforms, verifying credibility of online content before sharing, avoiding clicking on suspicious links or downloading unknown files, and being cautious when interacting with others online (e.g. on social media) by not engaging with strangers.
18. Students should exercise caution regarding the limitations of AI tools, including potential inaccuracies / fabricated responses, inherent biases and outdated information.

#### Digital Wellbeing and Balance

19. Students are reminded to balance screen time with other activities including physical exercise and face-to-face social interactions.
20. Students should avoid excessive use of their devices outside learning hours.
21. Students should take regular breaks to rest their eyes and mind.
22. Students are reminded to practise good sleep hygiene by not using their devices one hour before bedtime.

# Classroom Management and Routines

**YUYING L.E.A.R.N Habits**

**LISTEN** with Empathy, Communicate with Clarity.  
Listen carefully to others to understand their feelings and thoughts. Express your ideas in a clear manner for others to understand.

**EMBRACE** Challenges with Positivity.  
Face challenges with a positive attitude and see problems as opportunities for growth.

**ASK** Questions  
Stay curious by regularly asking questions to help you learn better and foster a culture of continuous improvement.

**REFLECT** and Adapt  
Take time to think about your actions and decisions. Act on feedback for areas of growth and improvement.

**NURTURE** Growth  
Stay committed to learning and growing throughout your life. Create a positive environment for everyone to grow.

**Classroom Cleanliness**  
Students ensure that the classroom is clean, and furniture is arranged neatly.

**Learning Materials**  
Students to put all the learning materials on the table and be ready for lessons.

**Attire**  
Students to put on the proper attire before the start of the lessons.

**Punctuality**  
Students to report punctually for all lessons.

**BRING**  
Bring your PLD and earphones to school everyday, bring them home daily.

**LOCK**  
Lock your PLD in your locker during PE, lunch and CCA.

**OWN**  
Own it! Be responsible for your PLD and passwords. Do not lend or share them with others!

**CHARGE**  
Charge your PLD fully before bringing it to school.

**KEEP**  
Keep your PLD away when it is not required for lessons.

**CLAP Classroom Routines**

**PLD Routines B.L.O.C.K.**

Integrity Resilience Respect Responsibility

# Cyber Wellness Education in CCE

## Educating students on Cyber Wellness

MOE has made significant changes to the Character and Citizenship Education (CCE) curriculum. Cyber Wellness lessons will feature significantly in these lessons.

The broad topics covered in Cyber Wellness are:

- Cyber Use
- Cyber Identity
- Cyber Relationships
- Cyber Citizenship
- Cyber Ethics

# Cyber Wellness Education in CCE

Throughout their Secondary School education, students will learn about:

- Balanced use and self control
- Cyber bullying and Upstanding
- How to be a positive influence online
- How to handle online falsehoods
- How to manage social media (peer influence, emotions, echo chambers)
- Online relationship and Online safety (grooming, self disclosure)
- To respect intellectual property rights

# Parents'/Guardians' Role

- Parents/guardians play a crucial role in guiding your child/ward to use devices responsibly and safely. We would like to partner parents/guardians so that students are well supported in their use of technology for learning.
- As parents/guardians, you can help in the following ways:
  - Model good digital habits for your child/ward e.g., parents/guardians not using devices during family meals.
  - Know your child/ward well and have conversations with your child/ward about safe and responsible use of technology.
  - Discuss and come up with ground rules for internet/device usage that both your child/ward and you can agree with.
  - Encourage your child/ward to use productivity tools on his/her PLD, to organise information and simplify tasks for efficiency.

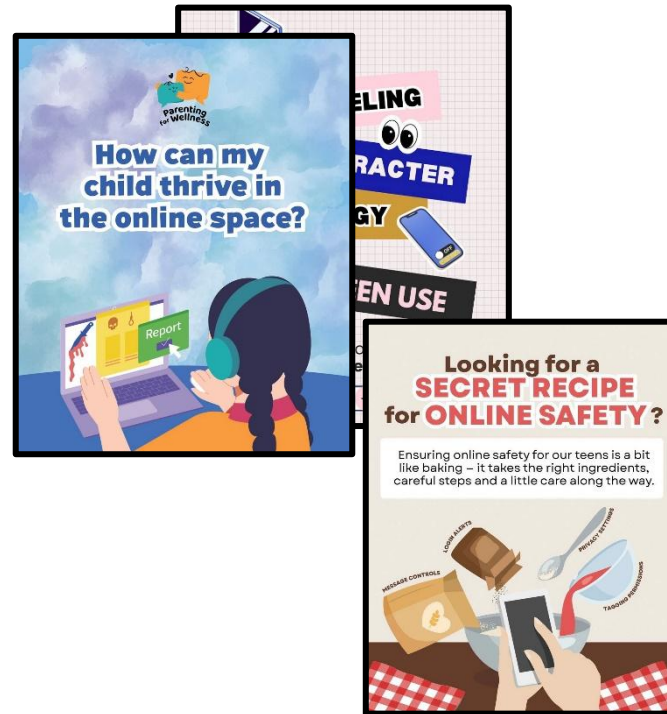
# Supporting Resources

Here are some resources that you can refer to:

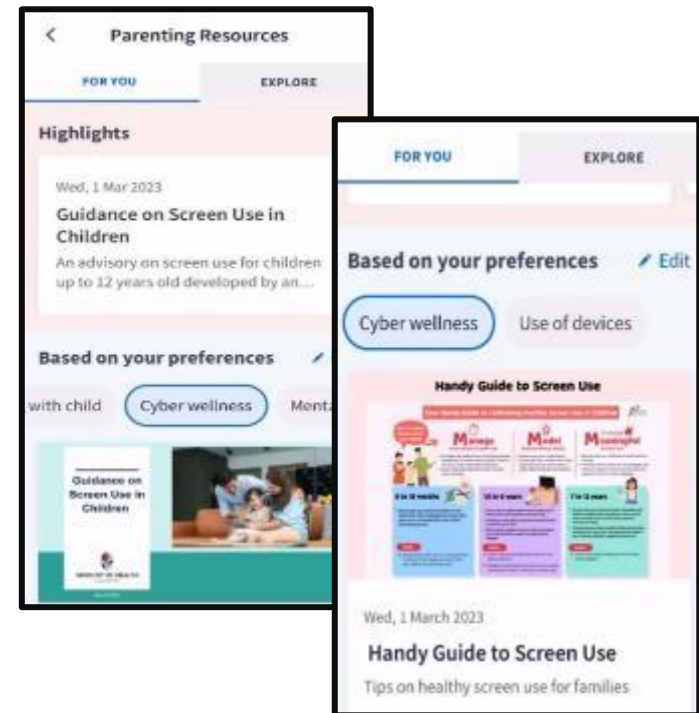
## A. Parent Kit



## B. Bite-sized tips and advice via Parentingwith.MOEsg Instagram page



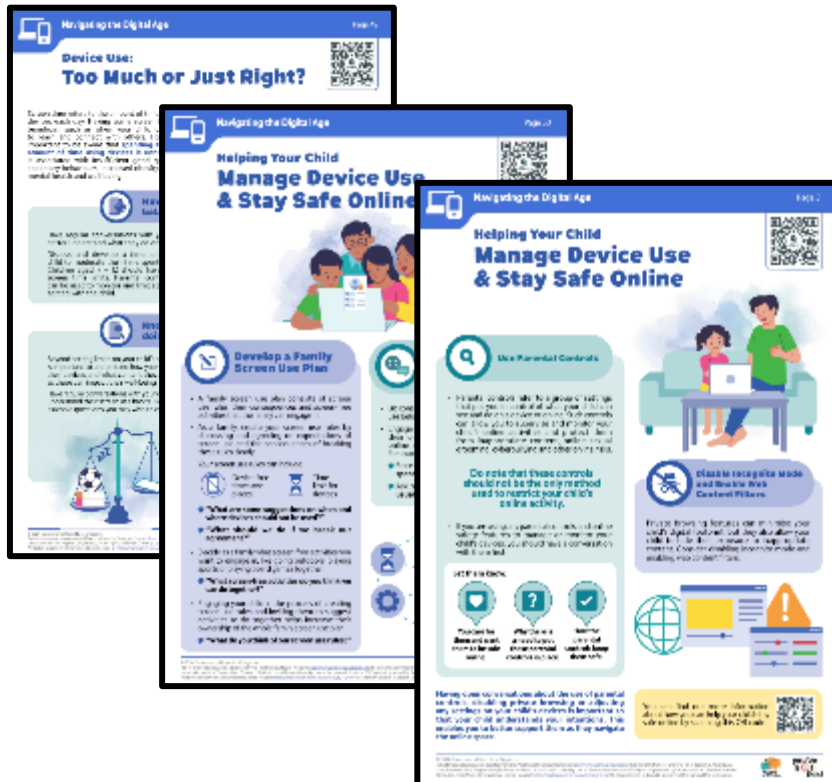
## C. Resources from MOE and other agencies (available on resources repository in Parents Gateway)



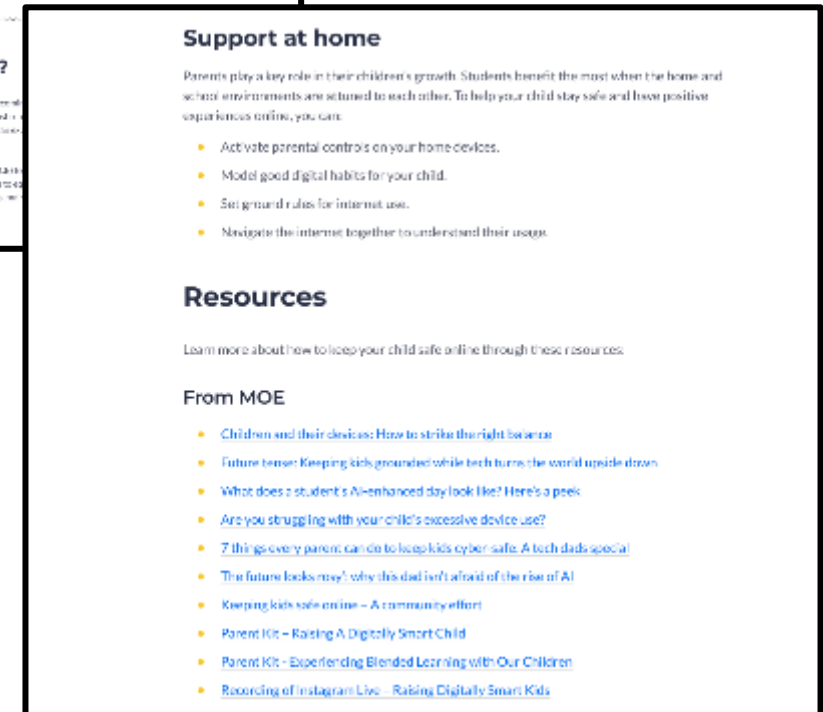
# Supporting Resources

## D. Parenting for Wellness Toolbox for Parents and Parenting for Wellness Website on Parent Hub

The Parenting for Wellness initiative provides bite-sized resources (practical tips and strategies) on building strong parent-child relationships, supporting your child's mental well-being and parenting in the digital age.



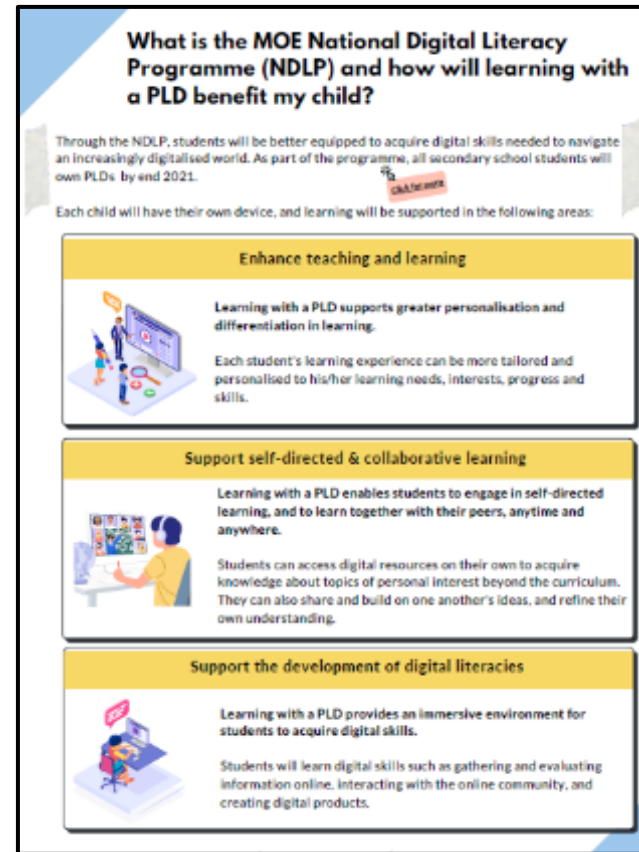
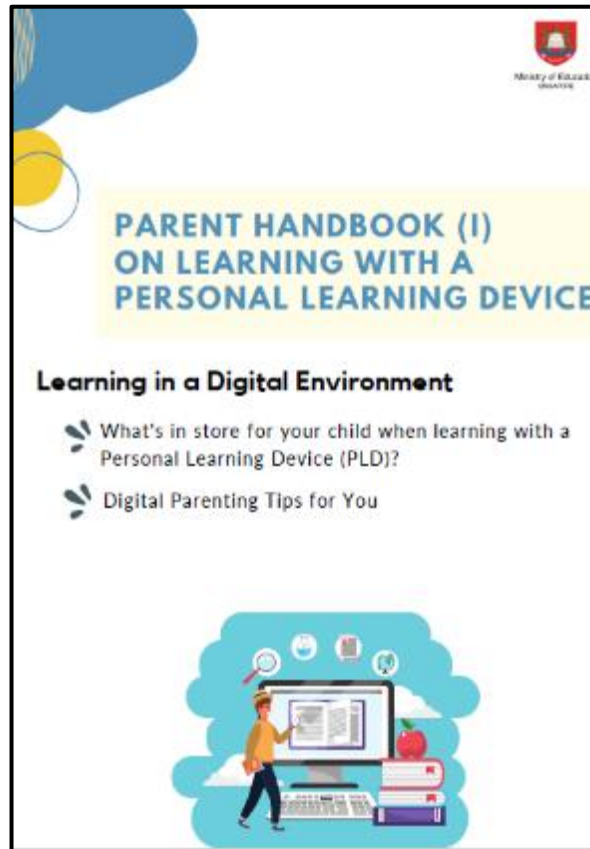
## E. More resources are available via [the MOE Cyber Wellness Webpage](#)



# Supporting Resources

## F. Parent Handbooks (I) and (II) on Learning with a Personal Learning Device

These Handbooks provide tips on supporting your child in the use of PLDs for learning and are shared via the PG notification together with the letter to purchase PLDs.



# **Role of the MOE Device Management Application (DMA) in Providing a Safer Digital Environment for Learning**

# MOE DMA

- The MOE DMA solution for Chromebook, Lightspeed Systems<sup>®</sup>, is an app that will be installed on all students' PLDs to support their safe and responsible use of devices.
- The DMA will be funded by MOE.
- The installation of the MOE DMA applies to both devices purchased through the school and any student-owned devices that parents/guardians opt for the student to use instead of the school-prescribed PLD.
- The MOE DMA will be installed after the collection of the device. Students will be guided on the installation.
- The MOE DMA will be uninstalled from the device when students graduate or leave the school.

# In-School DMA Settings (Default)

Schools will determine DMA settings for **in-school use**. As a default, these settings will continue to be in place after school as well:

- MOE and the school will set the level of web content filtering, including filtering objectionable content or content that may not be conducive to teaching and learning (e.g., online messaging, **social media**, pornography, gambling, or websites containing extremist content).<sup>1</sup>
- School hours are defined to be from **<6:30 am to 3.10 pm>** and after school hours-from **<3.10 pm to 10:30 pm>**. The device will shut down at **10:30 pm** by default.<sup>2</sup>
- The school will determine the applications and programs to be installed to support teaching and learning.

# After-School DMA Parent Options

1. After-School DMA Parent Options provide parents with the flexibility in managing their child’s/ward’s use of the PLD after school hours.
2. The following tables outline the different levels of restrictions, controls, and monitoring for each DMA option after school hours.

Default	Option A	Option B
<p><b>Default Setting</b> (Note: This will apply if no alternative options are chosen)</p>	<p><b>DMA settings can be modified by Parents/Guardians after school hours</b></p>	<p><b>DMA will be inactive after school hours<sup>1</sup></b></p>
<p>For parents/guardians who want their child’s/ward’s use of the PLD to be restricted only to teaching and learning, and prefer to leave it to the school to decide on DMA settings after school hours.</p>	<p>For parents/guardians who prefer to take charge of the level of restrictions for their child’s/ward’s use of the PLD after school hours regulated by the DMA.</p>	<p>For parents/guardians who do not want their child’s/ward’s use of the PLD after school hours to be regulated by the DMA at all.</p>

<sup>1</sup> No data will be collected after school hours when the DMA is inactive.

- Having default school settings continue after school hours is the best option for parents/guardians who prefer not to, or do not feel ready to manage their child’s/ward’s device use on their own.
- Parents/guardians can request to change their choice of DMA settings, which is the existing practice.

# After-School DMA Parent Options

	<b>Default Setting</b> (This will apply if no Alternative Options are chosen)	<b>Alternative Setting: Option A</b> (DMA settings can be modified)	<b>Alternative Setting: Option B</b> (DMA will be inactive only after school hours)
<b>Protect students from objectionable content</b>	Web content filtering will include, and not limited to the following categories: <ul style="list-style-type: none"> <li>• Violent/extremist content</li> <li>• Sexual/pornographic content</li> <li>• Suicide/self-harm content</li> <li>• Cyberbullying content</li> <li>• Content endangering public health</li> <li>• Gambling-related content</li> </ul>	Parents/Guardians will be able to include additional web content filtering by requesting school block any harmful website in addition to major social media websites (e.g., YouTube, Pinterest, X, Instagram, Facebook).  However, parents/guardians cannot allow access to web content that is filtered out under the Default Setting.  Parents can pause internet access after school hours.	No content filtering after school hours if a student logs in to the Chromebook via his/her personal Google Account.

# After-School DMA Parent Options

	Default Setting (This will apply if no Alternative Options are chosen)	Alternative Setting: Option A (DMA settings can be modified)	Alternative Setting: Option B (DMA will be inactive only after school hours)
<b>Reduce distractions from learning through control of applications</b>	Parents/Guardians and students will be unable to install additional Chrome extensions and/or applications.	<p>Parents/Guardians will be able to install additional Chrome extensions and/or applications by submitting a request to the school.</p> <p>As these applications will be accessible both during and after school hours, please ensure that the requested applications support your child's/ward's learning.</p>	<p>Parents/Guardians and/or students will be able to install additional Chrome extensions and/or applications after school hours via the Google Play Store, using the parent's/student's personal Google account.</p> <p>These applications will not be accessible during school hours as students will have to login using their student iCON account.</p>

# After-School DMA Parent Options

	Default Setting (This will apply if no Alternative Options are chosen)	Alternative Setting: Option A (DMA settings can be modified)	Alternative Setting: Option B (DMA will be inactive only after school hours)
<b>Limit screen time</b>	The school will define the specific hours during which the PLD is allowed to access the internet.	Parents/Guardians can modify the amount of screen time for their child/ward by requesting the school set sleep hours (by selecting 1 prescribed option) on their child's/ward's PLD. <sup>2</sup>	No limitation on duration of screen time after school hours.  Sleep hours are not enforced. <sup>3</sup>

<sup>2</sup> During school hours, the screen time limits set by the school will override parents/guardians' settings.

<sup>3</sup> It is not recommended to install other parental controls (e.g., Google's Family Link) as this could result in conflicting settings between school and parent controls. It may result in unexpected issues where some controls such as screen time restrictions may not work as intended.

# After-School DMA Parent Options

	Default Setting (This will apply if no Alternative Options are chosen)	Alternative Setting: Option A (DMA settings can be modified)	Alternative Setting: Option B (DMA will be inactive only after school hours)
<b>Monitor students' cyber activities</b>	Parents/Guardians will not be able to track their child's/ward's browser history.	Parents/Guardians can track their child's/ward's browser history after school hours via. the Lightspeed parents' portal. A Filter Portal Weekly Report can also be emailed to them.	Parents/Guardians will not be able to track their child's/ward's web browser history.
<b>Provision of Parent Account</b>	<b>X</b>	<b>✓</b>	<b>X</b>

# Support for Parents/Guardians

Parents/guardians may wish to consider the following questions to decide the After-School DMA Parent Option that best suits your child/ward.



## A. Child's/ward's current device usage habits

- How much time does my child/ward spend on their device?
- How well is my child/ward able to regulate their device usage on their own?
- Does my child/ward get easily distracted while doing online learning?



## B. Parents'/Guardians' involvement

- How confident and familiar am I with managing my child's/ward's cyber wellness?
- Are there existing routines and open conversations on the use of the Internet at home?
- Am I aware of how to prevent different types of cyber threats that my child/ward might face?

# Data Collected by the MOE DMA

1. The MOE DMA does **NOT** collect any of the following data:
  - Login IDs and passwords entered into websites or into any applications
  - Actions performed (e.g., posts, online comments, items added to a shopping cart, etc.) when visiting websites and using apps
  - Documents and photos stored in the PLDs
  - PLD location
  - Webcam videos and microphone recordings
2. Parents may update their personal data (e.g., email addresses, names) by contacting the school, in accordance with the Personal Data and Protection Act (PDPA).

# Data Security

- All user data collected through the MOE DMA will be stored in secure servers managed by appointed DMA Vendors with stringent access controls and audit trails implemented.
- Data such as device information, email address of students and parents, device information will be deleted when the student graduates or leaves school. Website URLs accessed by students will be deleted at the end of each term.
- The MOE DMA solutions used are cloud-based Software-as-a-Service (SaaS) solutions and are trusted solutions that have been operating for many years. They have also been subject to regular security reviews and assessments by independent reviewers.

# Data Security

- The MOE DMA solutions have sufficient security robustness to ensure that the data collected is properly stored and protected. MOE will also subject the DMA Vendors to regular security system audits based on tender requirements.
- To prevent unauthorised access, DMA Administrators and DMA Vendors will be required to access their accounts using 2-factor authentication or the equivalent to ensure proper accountability for information access and other activities performed. There will be regular account reviews and audits for DMA Administrators' and DMA Vendors' accounts.

# Device and Funding Information

# Yuying Secondary School's PLD

## 2. PLD Models – Specifications, Key Features, Upgrades and Accessories

Tier 1 Chromebook: R857TN

Price including GST (Enhanced Bundle = \$648.50)

	Detailed Specifications	Upgrade Options
<b>Form</b>	2-in-1 <b>Convertible</b>	Upgrade to 4yr Warranty + Insurance Upgrade to Intel® Processor N250 Upgrade to 128 GB eMMC
<b>Processor</b>	Intel® Processor N150	
<b>Memory</b>	8GB, LPDDR5X, 4800MT/s	
<b>Storage</b>	64GB eMMC	
<b>Screen</b>	<b>12.2" WUXGA</b> (1920 x 1200) IPS; touchscreen	
<b>Weight</b>	1.5 kg	
<b>Battery</b>	53 Wh	
<b>Stylus</b>	Acer <b>Active Stylus Pen</b> <b>USI 2.0</b> ; Pressure Sensitivity: 4096	
<b>Camera</b>	Front: 0.9MP Rear: 8MP <b>*Dual Cameras!*</b>	
<b>Ports</b>	2 x USB-A 3.2; 2 x USB-C 3.2; <b>1 x HDMI 1.4</b> ; 1 x 3.5mm headphone/speaker jack port	
<b>WiFi</b>	WiFi 6E; 802.11a/b/g/n/ac/ax; 2.4GHz/5GHz/6GHz	
<b>Bluetooth</b>	Bluetooth 5.3	



# Yuying Secondary School's PLD



The school chose the device because of:

- Portability
- Durability
- T&L Affordances

# PLD Bundle

## Device Bundle includes

- **Model: Chromebook Spin R857TN**
  - **Processor: Intel Processor N250**
  - **Memory (size, type, speed): 8GB LPDDR5X 4800MT/s**
  - **Storage (type and size): 128GB eMMC**
  - **Enhanced Bundle Warranty: 4-Year Carry-in Warranty**
  - **Enhanced Bundle Insurance: 4-Year Insurance**

Your child's/ward's PLD will come with the **Base/Enhanced Device Bundle** which includes:

- 4-year warranty and
- 4-year insurance (which includes 2 repairs or 1 replacement claim)

Please note that the price of the PLD Bundle may appear to be higher than similar models on the retail market as the price of those devices usually does not include extended warranty and insurance coverage.

# Insurance Coverage

The package includes:

Insurance Coverage	Claimable
<ul style="list-style-type: none"><li>• Fire</li><li>• Lightning</li><li>• Power Surges</li><li>• Accidental e.g water spillage, drop etc</li><li>• Theft due to forcible entry</li><li>• Robbery</li></ul> <p>* Accidental loss will not be covered by insurance.</p>	<p><b>*2 repairs or 1 replacement claim (4-year insurance)</b></p>

# Technical Support for Students' Devices

Technical support will be provided to students through:

- Service Desk set up in school during breaks and after school on a weekly basis
  - Troubleshooting of device issues
  - Solve connectivity issues
  - Collection of devices to be sent for repairs
- XYZ Vendor's service centres
  - Repair of devices (hardware issues)

# Funding Support for Singapore Citizen (SC) Students

- **The cost of the device bundle can be paid using your child's/ward's Edusave account**, after setting aside provision for payment of miscellaneous fees.
- To ensure the affordability of devices, MOE has provided Edusave top-ups from 2020 to 2023 to all eligible Singaporean students in primary and secondary schools. In 2025, MOE has provided a \$500 Edusave top-up for students aged 13-16 years old.
- These top ups are on top of the annual \$290 credited into the Edusave account for Secondary School students and \$230 for Primary School students.

# Funding Support for Singapore Citizen (SC) Students

- For SC students who are on MOE Financial Assistance Scheme or whose family's monthly income meets the following criteria:

Gross Household Income (GHI)  $\leq$  \$4,000, or

Per Capita Income (PCI)  $\leq$  \$1,000

MOE will subsidise 50% of device bundle cost or \$350, whichever is lower.

- The remaining amount will be payable from the students' Edusave account. If there is insufficient balance in the students' Edusave account for the remaining amount, MOE will provide additional subsidy so that the cash out-of-pocket (OOP) is \$0.

# Funding Scenario: Student A (SC)



11" Lenovo  
Chromebook  
\$648.50 (w GST)

Student A (SC on MOE FAS) GHI ≤ \$4,000 or PCI ≤ \$1,000	
Device Bundle Cost	<b>\$648.50</b>
Student Subsidy (50%)	<b>\$324.30</b> (rounded up to nearest 10 cents)
Available Edusave Balance <i>(After setting aside for misc fees)</i>	\$200.00 before deduction \$200.00 will be deducted
Additional Subsidy	<b>\$124.29</b>
Cash Out-of-pocket	\$0.00

For more details on financial assistance, please approach the school.  
Each student will subsequently receive a personalised bill

# Funding Support for Singapore Citizen (SC) Students

- For SC students whose family's monthly income is:

$\$4,000 < \text{Gross Household Income (GHI)} \leq \$5,500$ , or

$\$1,000 < \text{Per Capita Income (PCI)} \leq \$1,375$

MOE will subsidise 30% of device bundle cost or \$200, whichever is lower.

- The remaining amount will be payable from the students' Edusave account. If there is insufficient balance in the students' Edusave account for the remaining amount, MOE will provide additional subsidy so that the cash out-of-pocket (OOP) is not more than \$50.

# Funding Scenario: Student B (SC)



11" Lenovo  
Chromebook  
\$648.50

Student B (Non MOE-FAS SC from lower income family) \$4,000 < GHI ≤ \$5,500 or \$1,000 < PCI ≤ \$1,375	
Device Bundle Cost	<b>\$648.50</b>
Student Subsidy (30%)	<b>\$194.55 (rounded up to nearest 10 cents)</b>
Available Edusave Balance <i>(After setting aside for misc fees)</i>	\$200.00 before deduction \$200.00 will be deducted
Additional Subsidy	<b>\$203.95</b>
Cash Out-of-pocket	<b>\$50.00</b>

For more details on financial assistance, please approach the school.  
Each student will subsequently receive a personalised bill.

# Funding Support for Singapore Citizen (SC) Students

- Subsidies will not be provided for SC students whose family's monthly:
  - Gross Household Income (GHI) is above \$5,500 or
  - Per Capita Income (PCI)<sup>#</sup> is above \$1,375.
- Parents/Guardians can use their child's/ward's Edusave or cash to defray the device bundle cost.

<sup>#</sup>PCI is Gross Household Income divided by the number of household members.

# Funding Scenario: Student C (SC)



11" Lenovo  
Chromebook  
\$648.50\*

Student C (Not Eligible for Subsidy) GHI > \$5,500 or PCI > \$1,375	
Device Bundle Cost	<b>\$648.50</b>
Available Edusave Balance <i>(After setting aside for misc fees)</i>	\$200.00 before deduction \$200.00 will be deducted
Cash Out-of-pocket	<b>\$448.50</b>

For more details on financial assistance, please approach the school.  
Each student will subsequently receive a personalised bill.

**What's Next?**

# Parental Consent for Procurement

1. Parents/Guardians can access the **Parental Consent for the Purchase of Personal Learning Device (PLD)** via a Parents Gateway (PG) notification that will be sent to you on <29 May 2026>.
2. Parents/Guardians who want to use Edusave funds for the PLD (for Singapore Citizens students only), please access: <https://go.gov.sg/edusaveformsgso> by <3 June, 12 pm > to set up a **PDLP Standing Order** as this was not applicable during primary school.

# For Singapore Citizens (SC) Students

Time Frame	Activity
29 May to 3 June(12pm)	<ol style="list-style-type: none"><li>1. Submit:<ol style="list-style-type: none"><li>a. consent to PLD purchase via the PG notification which includes the following:<ul style="list-style-type: none"><li>• Intent to Purchase Personal Learning Device (PLD);</li><li>• Authorisation Form for the Collection of PLD</li></ul></li><li>b. the Standing Order (SO) for the use of Edusave Account via <a href="https://go.gov.sg/edusaveformsgso">https://go.gov.sg/edusaveformsgso</a> (for Singapore Citizen students only) to set up a PDLP SO</li><li>c. Parents without access to PG can submit their consent via hardcopy. (Contact General Office : 62827968 or email at: <a href="mailto:Yuying_ss@moe.edu.sg">Yuying_ss@moe.edu.sg</a>)</li></ol></li></ol>
Term 3	Collection of devices by students

# For Permanent Residents / International Students

Time Frame	Activity
29 May to 3 June(12pm)	1. Submit consent to PLD purchase which includes the following: <ul style="list-style-type: none"><li>• Intent to Purchase Personal Learning Device (PLD);</li><li>• Authorisation Form for the Collection of PLD</li></ul> <p>(Contact General Office : 62827968 or email at:yuying_ss@moe.edu.sg)</p>
Mid July	Parent/Guardian to make payment via Giro/PayNow (After receiving school bill)
Term 3	Collection of devices by students

# Collection of Devices

Your child/ward will be collecting his/her device in school **from Term 3 2026**.

If you would like to personally/have another adult to verify the condition of the device during collection with your child/ward:

- You may collect the device personally or appoint an adult proxy to do so **at the vendor's service/collection centre\***
- Your child/ward would need to bring the device to school and arrange for the school's IT department to install the DMA.

Please approach the school for further advice or clarification if you would like to make this arrangement.

\*Parents/Guardians (or adult proxy) will **not** be able to collect the PLD from the school.

# Important Contacts / Helplines

To access / find out more about...	Contact / Helpline
This deck of slides	<a href="https://www.yuyingsec.moe.edu.sg/yyss/Student-Personal-Learning-Device-Support/">https://www.yuyingsec.moe.edu.sg/yyss/Student-Personal-Learning-Device-Support/</a>
Edusave balance	6260 0777
Financial assistance	62827968 or yuying_ss@moe.edu.sg

# Thank you





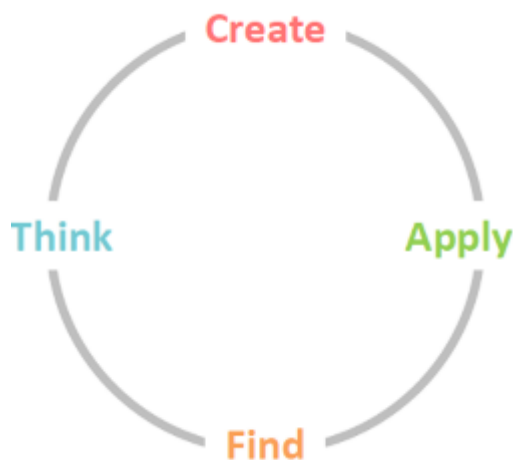
# Ministry of Education

## SINGAPORE

# Drawer Slides

# The National Digital Literacy Programme (NDLP)

The 'Find, Think, Apply and Create' framework:



<b>Find</b>	Critically gather and evaluate information from, and use digital resources in a safe, secure, responsible and ethical manner
<b>Think</b>	Interpret and analyse data, and solve problems
<b>Apply</b>	Use software and devices to facilitate the use of knowledge and skills in new contexts; keep up with technological developments
<b>Create</b>	Produce content and artefacts, and engage and collaborate with others digitally

# Components of the MOE DMA

The MOE Device Management Application (DMA) software consists of the following three components:

- **Mobile Device Management Service (MDM)**
- **Classroom Management Service (CMS)**
- **Usage Management Service (UMS)**

# MOE DMA Components and their Functions

## 1. Mobile Device Management Service (MDM)<sup>1</sup>

This facilitates the **updating and management of the PLDs, protects PLDs from malicious software, and protects your child/ward from objectionable internet content or content that may not be conducive to teaching and learning during school hours.**

The MDM carries out the following functions:

- Facilitates automatic installation of applications required for teaching and learning
- Filters objectionable content or content that may not be conducive to teaching and learning (e.g. social media, pornography, gambling, or websites containing extremist content)<sup>2</sup>
- Enables automatic updating of PLD OS and its applications in accordance with cybersecurity best practices

<sup>1</sup> MDM is a **core service** that is required to deliver Classroom Management Service and Usage Management Service (which includes the Parental Control app).

<sup>2</sup> Youtube is not blocked by default as teachers use Youtube for teaching and learning. However, Youtube videos that are categorised as harmful by YouTube Restricted and Lightspeed Smart Play are blocked.

# MOE DMA Components and their Functions

## 2. Classroom Management Service (CMS)

Enables teachers to **manage the student's use of the PLD** during lesson time to improve classroom management and support effective teaching and learning. Teachers will only be able to view students' screens during lessons.

During lessons, teachers will be able to:

- Guide and monitor students' use of devices (e.g. lock or unlock screen to redirect students' attention or screen sharing)
- Launch specific applications and/or websites for teaching and learning on your child's/ward's device
- Facilitate the sharing of content

# MOE DMA Components and their Functions

## 3. Usage Management Service (UMS)\*

Enables the school and/or parents/guardians to **better supervise and set helpful limits for your child's/ward's use of PLD after school.\***

The UMS provides the following functions:

- Screen time control to allow school and/or parents/guardians to set usage limits so that your child/ward does not use the PLD excessively
- School and/or parents/guardian have control over the installation of applications to ensure that the device is used optimally for teaching and learning
- Filters objectionable content to protect your child/ward from harmful content
- Parents/Guardians can manage device usage of child/ward

\* Only available for parents/guardian on Option A.

# Types and Purpose of Data Collected by MOE DMA



**Data for DMA  
Administrative  
Purposes**



**Data for Application  
Management**



**Data for Web Content  
Filtering**



**Data for Sharing Students'  
Screen**



# Data for DMA Administrative Purposes

Essential for DMA and lesson set up and management of devices through DMA

## Examples:

- Students' and parents'/guardian's information (name, school name, email addresses, and class)
- Apps installed in your child's /ward's PLD
- Device and hardware information (e.g. device model, storage space)

## Accessible by:

- Teachers
- DMA Administrators in school and at MOE
- DMA Vendors



# Data for Web Content Filtering

Filtering of harmful content to ensure students' cyber safety

## Examples:

- URLs accessed on the PLDs (*Actions performed on websites are **NOT** captured*)
- Date and time of the access
- Student profile (Name, School name)

## Accessible by:

- Teachers (for activities during lessons)<sup>1</sup>
- Parents/Guardians (for activities after school hours)
- DMA Administrators in school and at MOE
- DMA Vendors

<sup>1</sup>The teacher will only be able to access the logs pertaining to the student's browser history for the class that the teacher teaches and will be able to access the logs outside of lessons. The teacher will not have access to the student's browser history outside of those specific lessons.



# Data for Application Management

To ensure that the installed apps are updated and functioning properly

## Examples:

- Installed apps and programs
- Date and time that the apps and programs were last updated
- Application error data

## Accessible by:

- DMA Administrators in school and at MOE
- DMA Vendors



# Data for Sharing Students' Screen

To allow teachers to check that students are on task, and address questions in class

## Examples:

- Only the streaming of 'live' screen view (*The screen view will **NOT** be stored*)

## Accessible by:

- Teachers during lessons only

# References

Information on [Slide 10](#) are obtained from:

- SHE and Global Shapers Singapore Hub Survey, 2023- <https://www.digitalforlife.gov.sg/-/media/Digital-For-Life/Resources/Documents/2023/12/20230410-SHE-Infographics-on-Online-Myths.pdf>
- Microsoft Online Safety Survey, 2024 - <https://news.microsoft.com/wp-content/uploads/prod/sites/40/2024/02/Microsoft-Global-Online-Safety-Survey-2024.pdf>
- Ministry of Digital Development and Information survey, 2024 - <https://www.mddi.gov.sg/media-centre/press-releases/survey-on-childs-online-gaming-activities/>
- Institute of Mental Health, 2024 - [https://www.imh.com.sg/Newsroom/News-Releases/Documents/NYMHS\\_Press%20Release\\_FINAL19Sep2024.pdf](https://www.imh.com.sg/Newsroom/News-Releases/Documents/NYMHS_Press%20Release_FINAL19Sep2024.pdf)